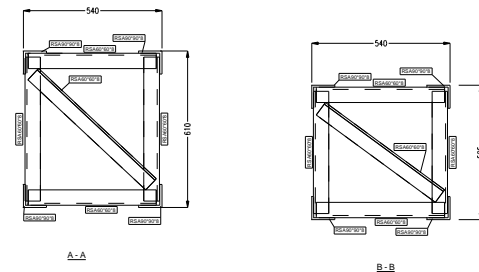
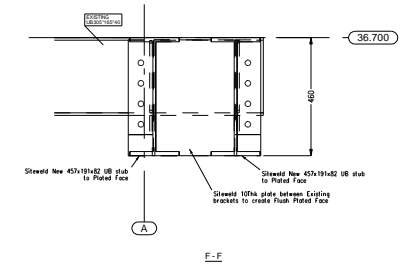


SECTION ALONG CENTRELINE OF LINK

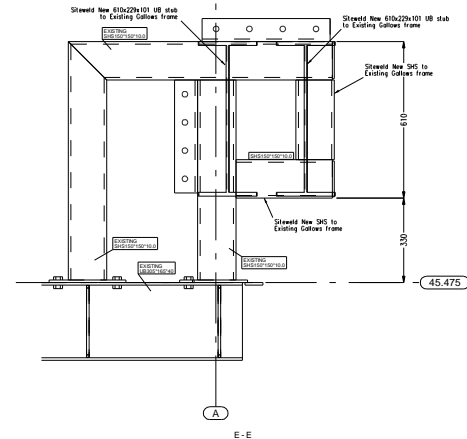


A-A

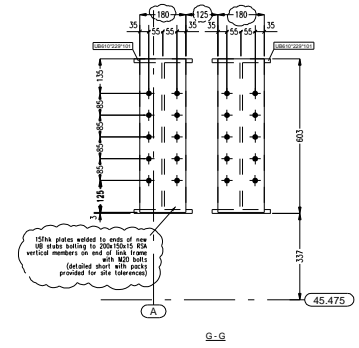
B-B



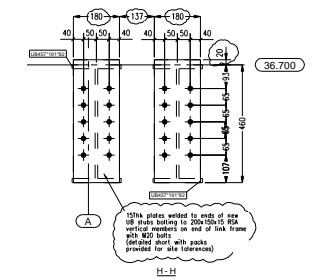
F-F



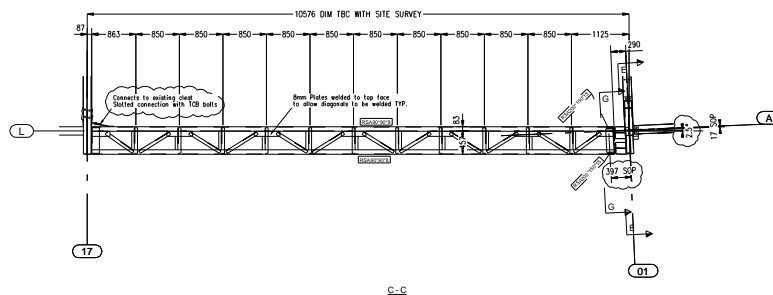
E-E



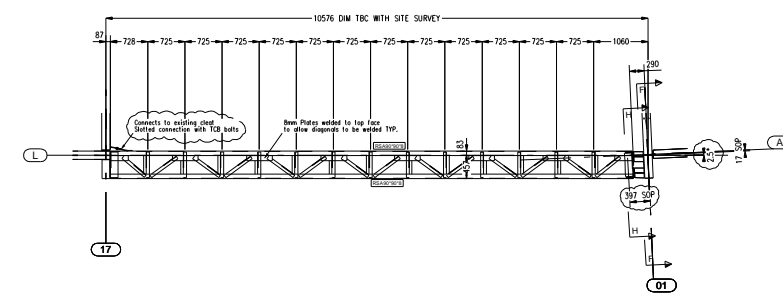
G-G



H-H



C-C



D-D

ROBINSON	
<small>R. Robinson & Sons (Engineers) Limited Wincanton Close Alton Drive Dursley, Glos. GL9 3JY Tel: 01322 861481 Fax: 01322 861483 E-Mail: DO@robinson.com Web: www.robinson.com</small>	
CLIENT Opal Property Group	
Chettles Yard, Nottingham	
TITLE Link Girders - Blocks D to E	
PROJECT NAME Chettles Yard Block E	
Scale: 1:10	Contract No: 9237
Arrangements by: D.N.	Drawing No: GA016
Checked by: D.N.	Revision: B
Date: 09.08.2010	Project: SHOT BLAST & PRIME
Issue Status Construction Issue	

08.10.10 Revised to suite latest proposed scheme
 25.10.10 Revised to suite latest comments